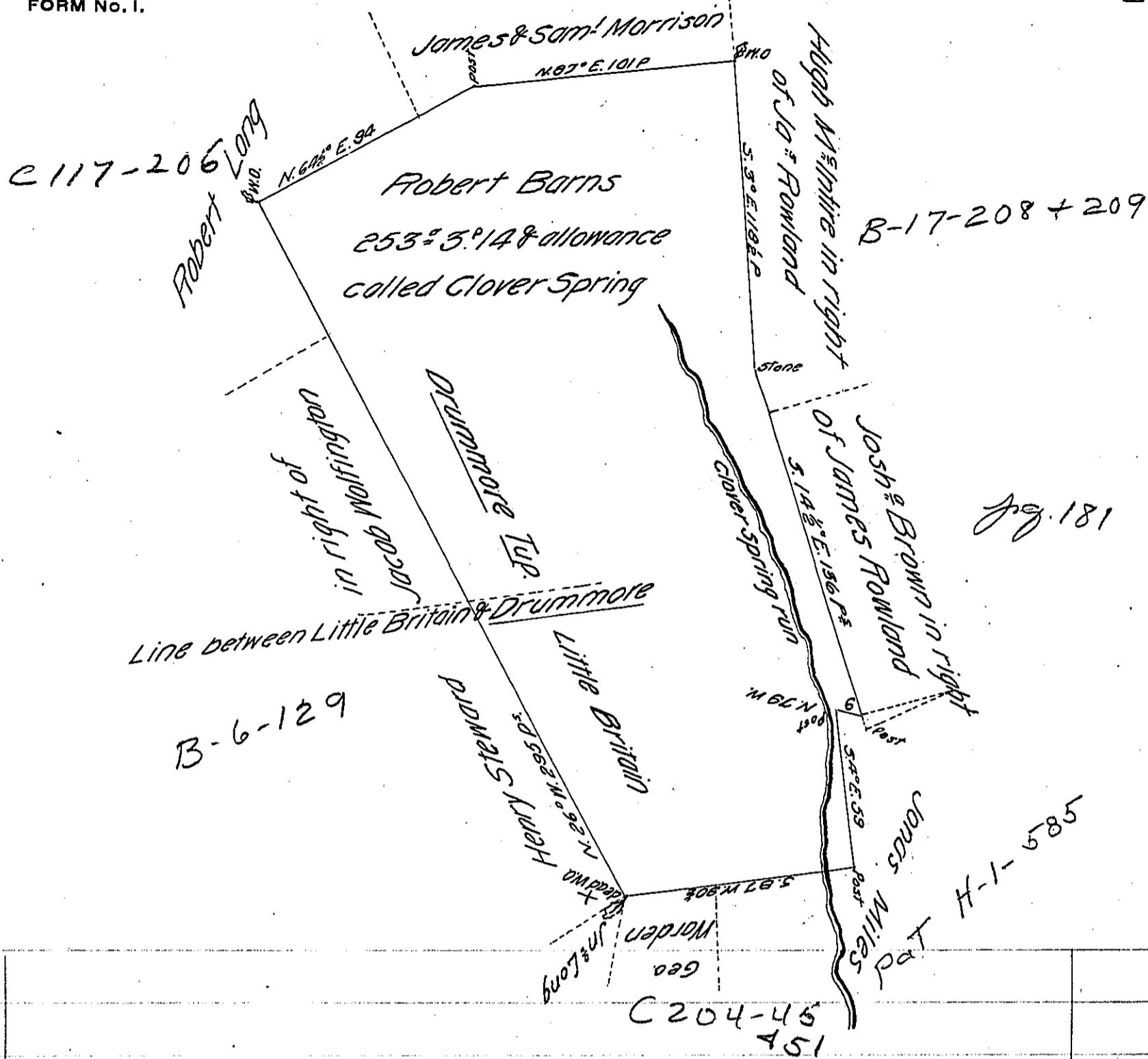


B-13-210

See Pat - H-1-585 12



A Draught of a tract of Land originally survey'd by Geo. Churchman by a Warrant of the 11th Oct^r 1738 to Abraham Nelson & resurvey'd at the request of Robt Barnes the 16th 11mo. 1786 & found by Calculation to contain 253° 3' 14" & the usual allowance situate part in L. Britain & part in Drummore in the County of Lancaster on Clover Spring Run a branch of Conawango.

Certified

John Churchman

The owner to pay the acceptance fee

To John Lukens Esq^r

Surveyor General

134

IN TESTIMONY that the above is a copy of the original remaining on file in the Department of Internal Affairs of Pennsylvania, made conformably to an Act of Assembly approved the 16th day of February, 1833, I have hereunto set my Hand and caused the Seal of said Department to be affixed at Harrisburg, this thirty-first day of July 1906

Isaac Brown
Secretary of Internal Affairs.